

OPERATOR RESPONSIBILITIES

Operating a motor vehicle on National Forest System roads, National Forest System trails, and in areas on National Forest System lands carries a greater responsibility than operating that vehicle in a city or other developed setting. Not only must you know and follow all applicable traffic laws, you need to show concern for the environment as well as other forest users. The misuse of motor vehicles can lead to the temporary or permanent closure of any designated road, trail, or area. As a motor vehicle operator, you are also subject to State traffic law, including State requirements for licensing, registration, and operation of the vehicle in question.

Motor vehicle use, especially off-highway vehicle use, involves inherent risks that may cause property damage, serious injury, and possibly death to participants. Drive cautiously and anticipate rough surfaces and features, such as snow, mud, vegetation, and water crossings common to remote driving conditions. By your participation, you voluntarily assume full responsibility for these damages, risks, and dangers. Take care at all times to protect yourself and those under your responsibility.

Much of the Shasta-Trinity National Forest is remote. Medical assistance may not be readily available. Cellular telephones do not work in many areas of the Shasta-Trinity National Forest. Take adequate food, water, first-aid supplies, and other equipment appropriate for the conditions and expected weather.

ALWAYS REMEMBER TO RESPECT PRIVATE LAND! PROTECT YOUR PRIVILEGE. STAY ON DESIGNATED ROADS AND TRAILS AND IN DESIGNATED AREAS.

Read and understand this map in its entirety. If you have questions please contact the Shasta-Trinity National Forest for clarification.

As a motor vehicle operator on a National Forest System road, trail, or area, you must comply with this map, as well as all Federal, State, and local laws and regulations. Compliance with these rules is your responsibility.

PROHIBITIONS

It is prohibited to possess or operate a motor vehicle on National Forest System lands on the Shasta-Trinity National Forest other than in accordance with these designations (36 CFR 261.13).

Violators of 36 CFR 261.13 are subject to a fine of up to \$5,000, imprisonment for up to 6 months, or both (18 U.S.C. 3571(e)). This prohibition applies regardless of the presence or absence of signs.

This map does not display nonmotorized uses, over-snow uses, or other facilities and attractions on the Shasta-Trinity National Forest. Obtain forest visitor information from the local national forest office.

Designated roads, trails, and areas may also be subject to temporary, emergency closures. As a visitor, you must comply with signs notifying you of such restrictions. A national forest may issue an order to close a road, trail, or area on a temporary basis to protect the life, health or safety of forest visitors or the natural or cultural resources in these areas. Such a temporary and/or emergency closures are consistent with the Travel Management Rule (36 CFR 212.52 (b), 36 CFR 261 subpart B).

The designation "road or trail open to all motor vehicles" does not supersede State traffic law.

Legend

- Roads Open to Highway Legal Vehicles
- Roads Open to All Vehicles
- Seasonal Designation (See Table)
- Interstate
- Highways, US, State
- Other Public Roads

70333 Short Route Identifier

FS Campground

Picnic Area

Peaks

Forest Boundary

National Forest System Lands

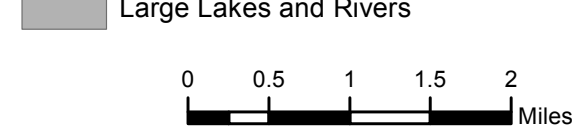
Non-National Forest System Lands within the National Forest

Wilderness Areas

Township and Range Lines

Section Lines

Large Lakes and Rivers



Areas Open to Cross Country Travel

Open Year-round (dependent on lake levels)

Public motor vehicle travel below the high water mark at Shasta Lake and Trinity Lake is restricted to highway legal vehicles with a maximum speed limit of 15 mph. Motor vehicle use to access permitted facilities (e.g., marinas, fee areas, and boat ramps) in open areas has no season of use restrictions.

Parking along Designated Routes

Motor vehicles may be parked within one vehicle length from the edge of the road surface when it is safe to do so without causing damage to NFS resources or facilities, unless prohibited by state law, a traffic sign, or an order (36 CFR261.54).

Short Route Identifier

Routes Too Short to be Seen Clearly on the Map

Route Number	Route Designation	Length in Feet
34N17H	Roads Open to All Vehicles, Yearlong	648
35N59A	Roads Open to Highway Legal Vehicles Only, Seasonal	275
36N03A	Roads Open to All Vehicles, Yearlong	291
36N26YB	Roads Open to All Vehicles, Yearlong	368
36N45YB	Roads Open to All Vehicles, Yearlong	390
36N49	Roads Open to All Vehicles, Yearlong	262
36N49A	Roads Open to All Vehicles, Yearlong	310
36N49B	Roads Open to All Vehicles, Yearlong	618
36N88A	Roads Open to All Vehicles, Yearlong	457
37N35YA	Roads Open to Highway Legal Vehicles Only, Seasonal	191
37N35YB	Roads Open to Highway Legal Vehicles Only, Seasonal	113
37N36	Roads Open to All Vehicles, Seasonal	335
37N40C	Roads Open to All Vehicles, Yearlong	337
37N60	Roads Open to Highway Legal Vehicles Only, Yearlong	132
38N80C	Roads Open to All Vehicles, Seasonal	270
40N26BA	Roads Open to All Vehicles, Yearlong	317
40N26E	Roads Open to Highway Legal Vehicles Only, Yearlong	392
42N17A	Roads Open to All Vehicles, Yearlong	498

Route Number	Legend	Dates Allowed
36N06Y, 36N06YC, 36N08Y, 36N09Y, 36N12, 36N12B, 35N36, 35N36A, 35N68, 35N68C, 35N70, 35N77, 37N01Y, 37N08YA, 37N08YC, 37N42, 38N49, 38N60, 38N60B, 38N80C, 38N85, 38N85G, 39N27	Roads Open to All Vehicles, Seasonal	05/01-10/31
35N14BA	Roads Open to Highway Legal Vehicles Only, Seasonal	04/02-09/12
35N15A	Roads Open to Highway Legal Vehicles Only, Seasonal	06/15-09/30
35N59, 35N59A	Roads Open to Highway Legal Vehicles Only, Seasonal	04/01-09/30
36N11	Roads Open to All Vehicles, Seasonal	05/15-10/31
36N37	Roads Open to Highway Legal Vehicles Only, Seasonal	04/01-10/31
37N35Y, 37N35YB	Roads Open to Highway Legal Vehicles Only, Seasonal	04/20-11/16
37N36	Roads Open to All Vehicles, Seasonal	08/16-12/31
39N27A	Roads Open to All Vehicles, Seasonal	05/15-09/15

PURPOSE AND CONTENTS OF THIS MAP

The designations shown on this motor vehicle use map (MVUM) were made by the responsible official pursuant to 36 CFR 212.51; are effective as of the date on the front cover of this MVUM; and will remain in effect until superseded by next year's MVUM.

David R. Myers
Forest Supervisor, Shasta-Trinity National Forest

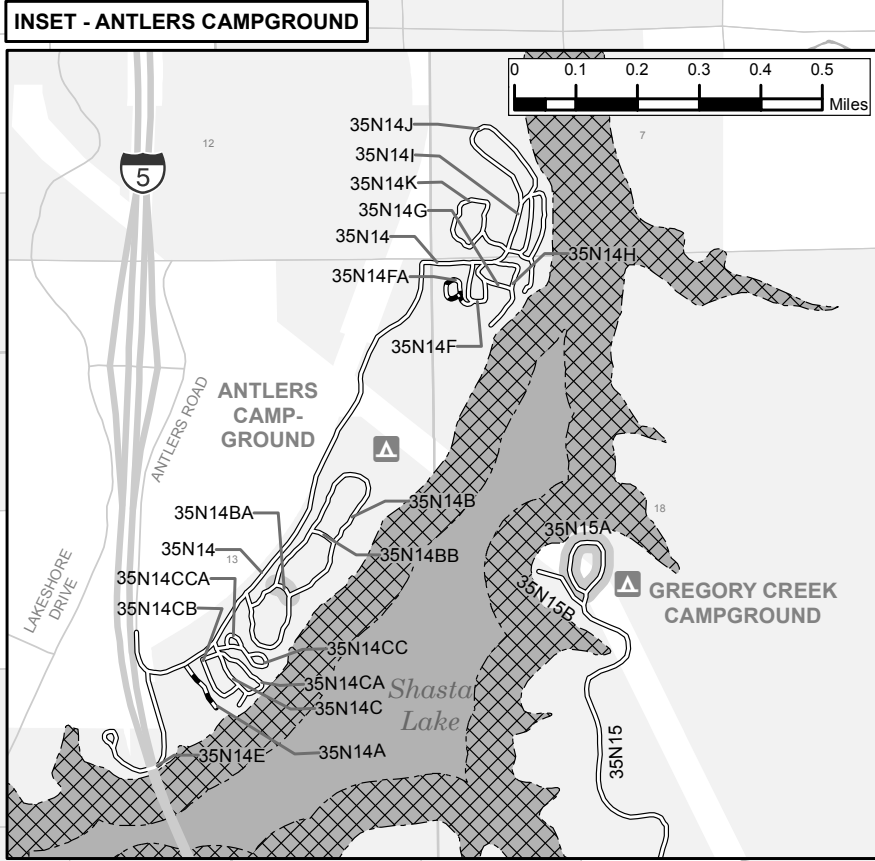
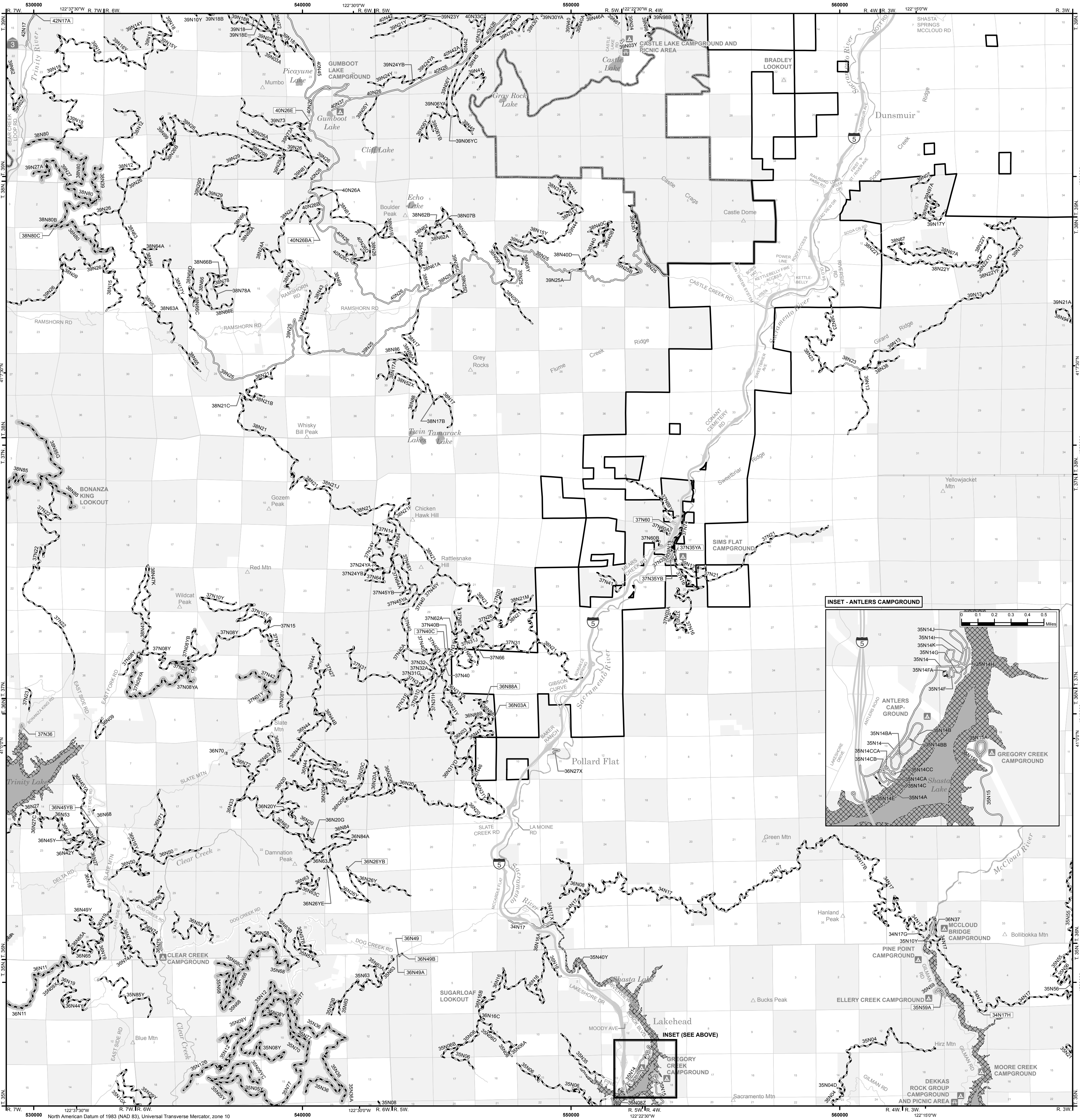
It is the responsibility of the user to acquire the current MVUM. This map shows the National Forest System roads, National Forest System trails, and the areas on National Forest System lands in the Mt. Shasta Ranger District that are designated for motor vehicle use pursuant to 36 Code of Federal Regulations (CFR) 212.51. This MVUM also identifies the vehicle classes allowed on each route and in each area; and any seasonal restrictions that apply on those routes and in those areas.

Designation of a road, trail, or area for motor vehicle use by a particular class of vehicle under 36 CFR 212.51 should not be interpreted as encouraging or inviting use or implying that the road, trail, or area is passable, actively maintained, or safe for travel. Motor vehicle designations include parking along designated routes and at facilities associated with designated routes when it is safe to do so and when not causing damage to National Forest System resources. Seasonal weather conditions and natural events may render designated roads and trails impassable for extended periods. Designated areas may contain dangerous or impassable terrain. Many designated roads and trails may be passable only by high-clearance vehicles or four-wheel-drive vehicles. Maintenance of designated roads and trails will depend on available resources, and many may receive little maintenance.

This motor vehicle use map identifies those roads, trails, and areas designated for the motor vehicle use under 36 CFR 212.51 for the purpose of enforcing the prohibition at 36 CFR 261.13. This is a limited purpose. The other public roads are shown for information and navigation purposes only and are not subject to designation under the Forest Service travel management regulation.

These designations apply only to National Forest System roads, National Forest System trails, and areas on National Forest System lands.

The U.S. Department of Agriculture (USDA) prohibits discrimination in all its programs and activities on the basis of race, color, national origin, age, disability, and where applicable, sex, marital status, familial status, parental status, religion, sexual orientation, genetic information, political beliefs, reprisal, or because all or part of an individual's income is derived from any public assistance program. (Not all prohibited bases apply to all programs.) Persons with disabilities who require alternative means for communication of program information (Braille, large print, audiotape, etc.) should contact USDA's TARGET Center at (202) 720-2600 (voice and TDD). To file a complaint of discrimination, write to USDA, Director, Office of Civil Rights, 1400 Independence Avenue, S.W., Washington, D.C. 20250-9410, or call (800) 795-5272 (voice) or (202) 720-6382 (TDD). USDA is an equal opportunity provider and employer.



Motor Vehicle Use Map

Shasta-Trinity National Forest

Mt. Shasta Ranger District



Other options for viewing or using this map include:

- ☐ View or download a copy of this map using your computer.
- ☐ Use the Avenza PDF Maps app (free) on iOS (Apple) and Android devices.

For more details go to:
<http://www.fs.usda.gov/stnf>

or scan this code with your smartphone or tablet.

treadlightly!
LEAVING A GOOD IMPRESSION

United States
Department of
Agriculture

Forest Service

California America's Great Outdoors 2014

